



DUNYA KALIP

Presentation



CONTENT

01 About us

03 Certificates

05 Machinery

07 Tool Shop

02 Employees

04 Process&Design

06 Tool Manufacturing

08 Referencess



01

About Us

40 years of experience in automotive industry

Dunya Kalip founded in 2006. Today We have 65 employees, 200.000 total hours/year internal capacity (90.000h Tool-Shop+80.000h CNC+30.000h Press) located in 4700 sqm closed area.

We are producing transfer and tandem tools from process up to green part level

Contact us:

Address : Köseler Mahallesi KOBİ OSB 29.Sokak No:11 Dilovası / Kocaeli/Türkiye

Tel : +90 262 658 94 04

Fax : +90 262 658 94 14

Mail : info@dunyakalip.com

Web : www.dunyakalip.com

G Maps : Dunya Kalip-2 <https://goo.gl/maps/ckQCtUhkDujXChQVA>



02

Employees

Total 65 qualified team

Project Management, Design, Quality

9



Management & Accounting

3



CAM Operators

4



CNC

19



Tooling

30



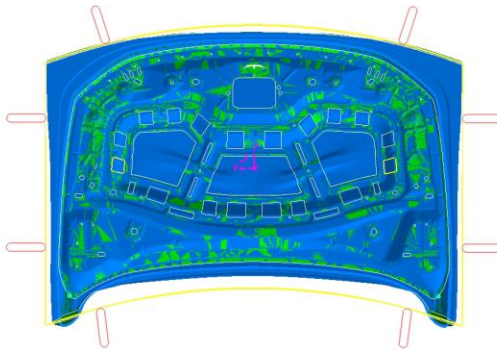


04



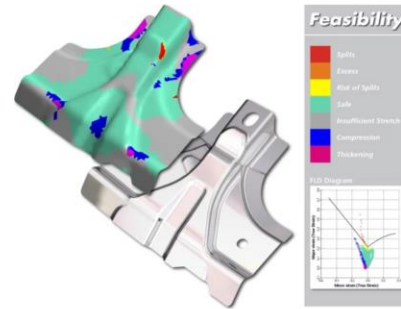
Process&Design

Flawless Process-Simulation-Design Capability



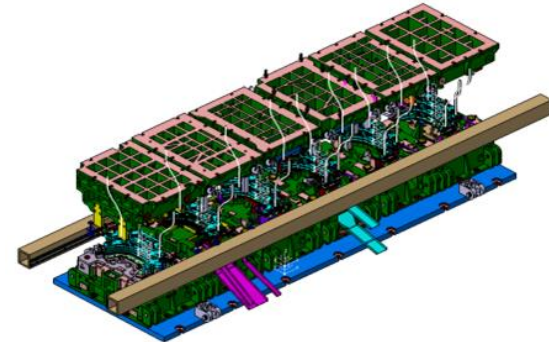
Process

Process design in Catia with calculations



Simulation

Autoform Simulations with springback & feasibility analysis



Design

3D tool design in Catia v5 with clash analysis



05

Machinery

High capacity CNC machining and Presses for Tooling Bussiness





05

worknc

AWA

Kafo

CNC Milling

High capacity CNC machining and Presses for Tooling Bussiness

5100 x 2700 x 1100	mm.	Bridge Type Vertical CNC
5000 x 2500 x 1200	mm	Bridge Type Vertical CNC
4000 x 2500 x 760	mm.	Bridge Type Vertical CNC
4000 x 2500 x 1200	mm	Bridge Type Vertical CNC
3000 x 2100 x 1200	mm	Bridge Type Vertical CNC
3000 x 2100 x 900	mm.	Bridge Type Vertical CNC
1200 x 600 x 600	mm.	Vertical CNC Machining Center
850 x 600 x 600	mm.	Vertical CNC Machining Center





05

Presses

High tonnage and big bed sized Hydraulic presses



5000x2500x2500 mm
1600 Tons Hydraulic Try-out press
(Upper-Lower Cushion)



5000x2500x2500 mm
1000 Tons Hydraulic Try-out press
(Upper-Lower Cushion)



4500 x 2500 x 2200 mm
200 Tons Hydraulic Try-out press



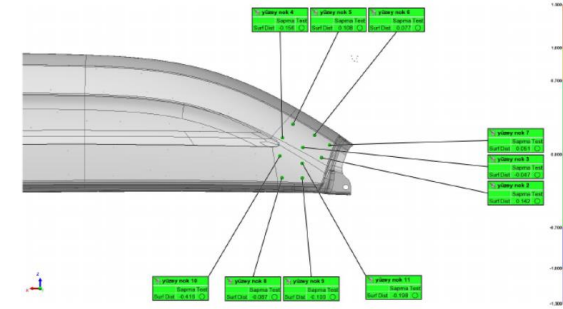
05

Measurement

Hexagon Römer Absolute Arm, Touch Probe & Scanner Head



HEXAGON



Comparison Point Table

Uzunluk Birimi: Milimetre
Koordinat Sistemi: dünya
Data Hizalaması: best-fit meas objects 2
Linked Objects:

İsim	Kontrol	Nom	Ölç	Tol	Sapma	Test	Tol Dışı
Yüzey nokta 2	Yüzey Mesafesi	0.142	±1.000	0.142	Kabul		
Yüzey nokta 3	Yüzey Mesafesi	-0.047	±1.000	-0.047	Kabul		
Yüzey nokta 4	Yüzey Mesafesi	-0.156	±1.000	-0.156	Kabul		
Yüzey nokta 5	Yüzey Mesafesi	0.108	±1.000	0.108	Kabul		
Yüzey nokta 6	Yüzey Mesafesi	0.077	±1.000	0.077	Kabul		
Yüzey nokta 7	Yüzey Mesafesi	0.051	±1.000	0.051	Kabul		
Yüzey nokta 8	Yüzey Mesafesi	-0.087	±1.000	-0.087	Kabul		
Yüzey nokta 9	Yüzey Mesafesi	-0.100	±1.000	-0.100	Kabul		
Yüzey nokta 10	Yüzey Mesafesi	-0.416	±1.000	-0.416	Kabul		
Yüzey nokta 11	Yüzey Mesafesi	-0.198	±1.000	-0.198	Kabul		





05

Hardening

Inhouse induction hardening & outsourced laser and core hardening for tools



Induction Hardening
ELDEC Mico-M 30KW



Laser Hardening



Core Hardening of steels



Tool Manufacturing

State of the art transfer and tandem-robot line sheet metal tool production

We are providing tools from process up to %100 green part level with home line tryout service included.

We are producing tools for chasis, skin panels, structural parts up to 6 mm of material thickness for regular, HSS and DP series materials.

Produced Tool Types:

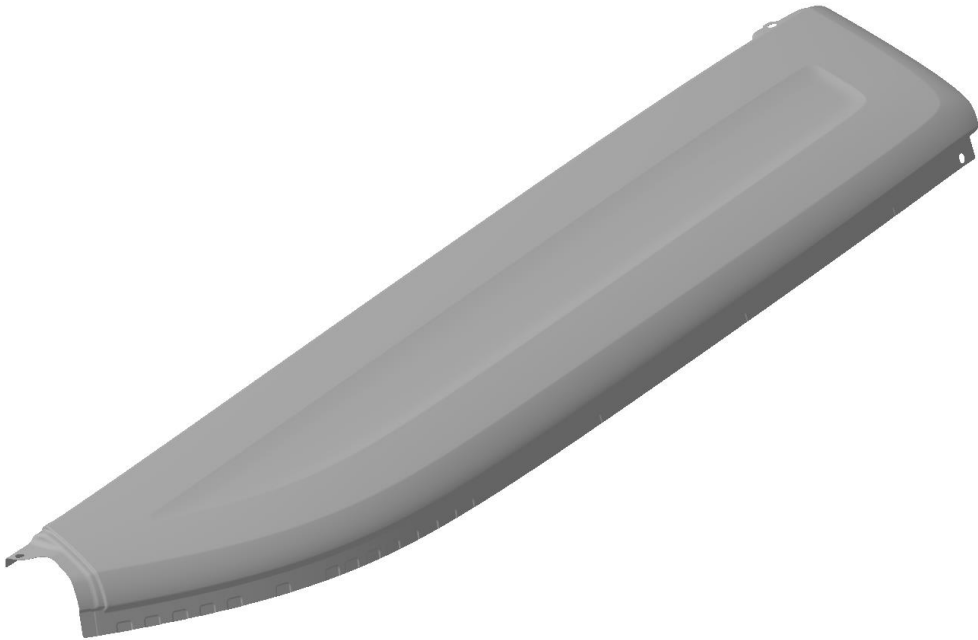
- Transfer
- Robot Tandem
- Manual Tandem
- Blanking Tools



06

Produced Part Examples (%100 Green)

State of the art Tansfer and Tandem-Robot line Sheet metal tool production

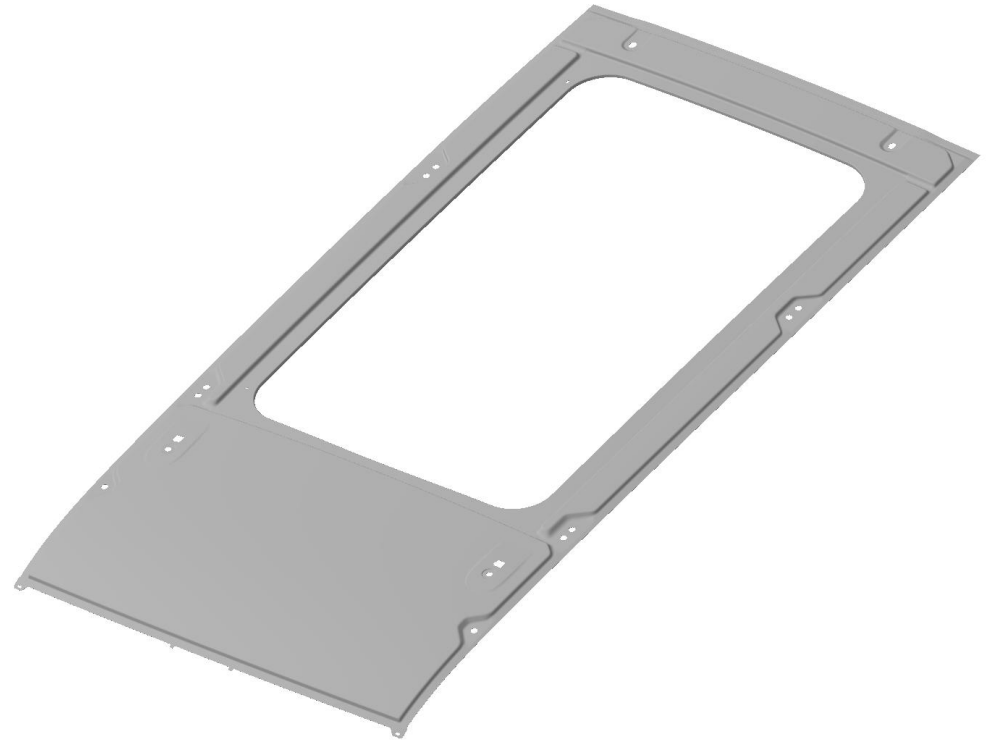




06

Produced Part Examples (%100 Green)

State of the art transfer and Tandem-Robotline Sheet metal tool production





06

Produced Part Examples (%100 Green)

State of the art Tansfer and Tandem-Robot line Sheet metal tool production

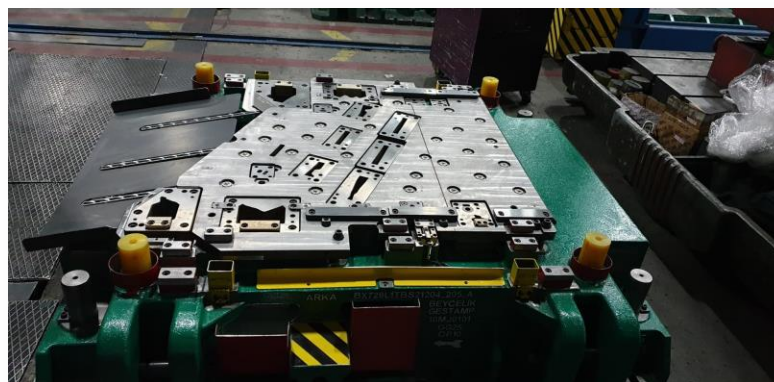




06

Produced Tool Examples

State of the art Transfer and Tandem-Robot line sheet metal tool production

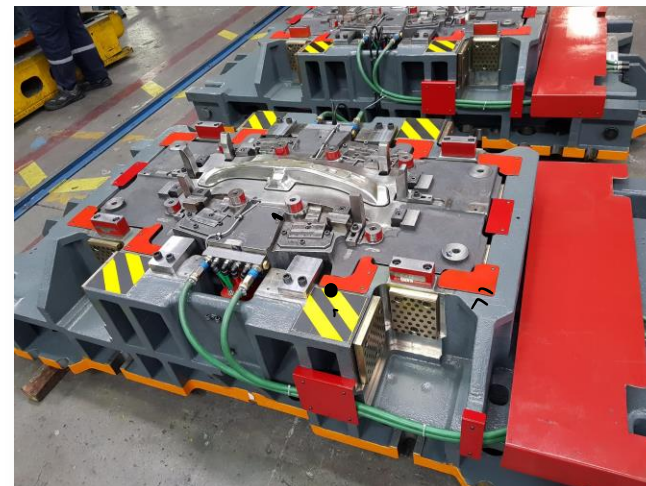
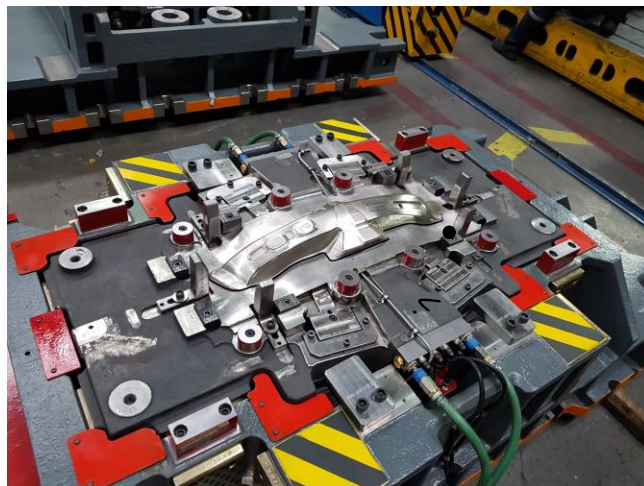




06

Produced Tool Examples

State of the art Tansfer and Tandem-Robot line Sheet metal tool production





06

Produced Tool Examples

State of the art Tansfer and Tandem-Robot line Sheet metal tool production





06

Produced Tool Examples

State of the art Tansfer and Tandem-Robot line Sheet metal tool production

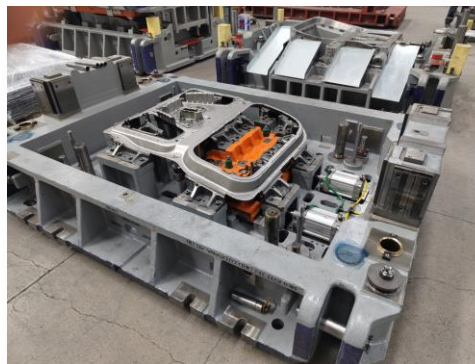
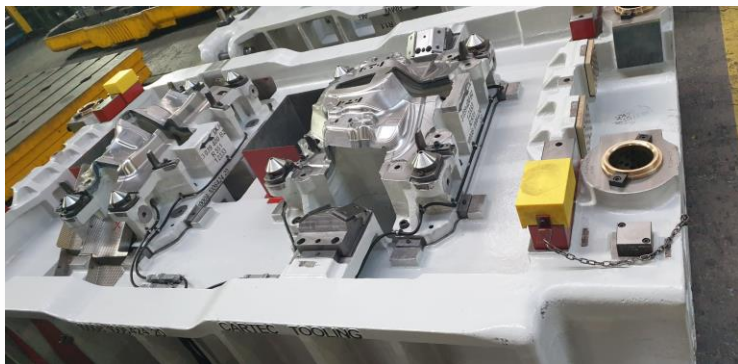


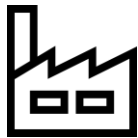


06

Produced Tool Examples

State of the art Tansfer and Tandem-Robot line Sheet metal tool production



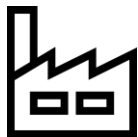


07

Tool Shop

4700 Sqm closed areaa with 200.000h/year internal capacity



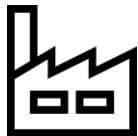


07

Tool Shop

4700 Sqm closed areaa with 200.000h/year internal capacity





07

Tool Shop

4700 Sqm closed areaa with 200.000h/year internal capacity





08

References

Let us Collaborate



FORD OTOSAN



Jeep

TOFAŞ TÜRK OTOMOBİL FABRİKASI A.Ş.



EMO SWZ

ORODJARNA d.o.o.

SIEBENWURST
WERKZEUGBAU



Metalsa

Quality as a way of life



Mercedes-Benz

Trucks you can trust

TOYOTETSU



THANKS

For your kind interest

Mech.Eng.Levent Cetindisli
levent@dunyakalip.com
+90 530 399 00 42